



01947 601301



THE NAVE, ST.BART'S, RUSWARP

4 BED CHARACTER PROPERTY



WWW.HOPEANDBRAIMESTATEAGENTS.CO.UK



PROPERTY FEATURES

- Stunning Home within a Grade II Listed Victorian Church
- Newly Converted with Modern Fixtures & Fittings
- Historic Features including Stained Glass & Carved Stonework
- Open Plan Living with Vaulted Ceiling & Full-Height Window
- Modern Kitchen with Island & Integrated Appliances
- 4 Double Bedrooms & 2 Luxury Bathrooms
- Principal Bedroom Suite with Dressing Room
- Air Source Heating & Underfloor Heating
- Private Garden with Patio & Private Parking
- Village Amenities & Close to the Coast

Type: **CHARACTER PROPERTY**

Availability: **FOR SALE**

Bedrooms: **4**

Bathrooms: **2**

Reception Rooms: **2**

Parking: **OFF ROAD PARKING**

Outside Space: **GARDEN**

Tenure: **FREEHOLD**

01947 601301

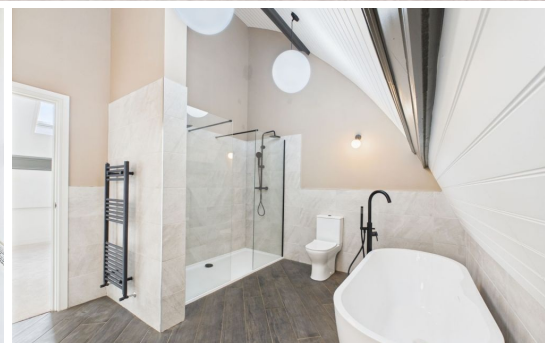
www.hopeandbraimstateagents.co.uk



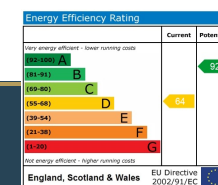
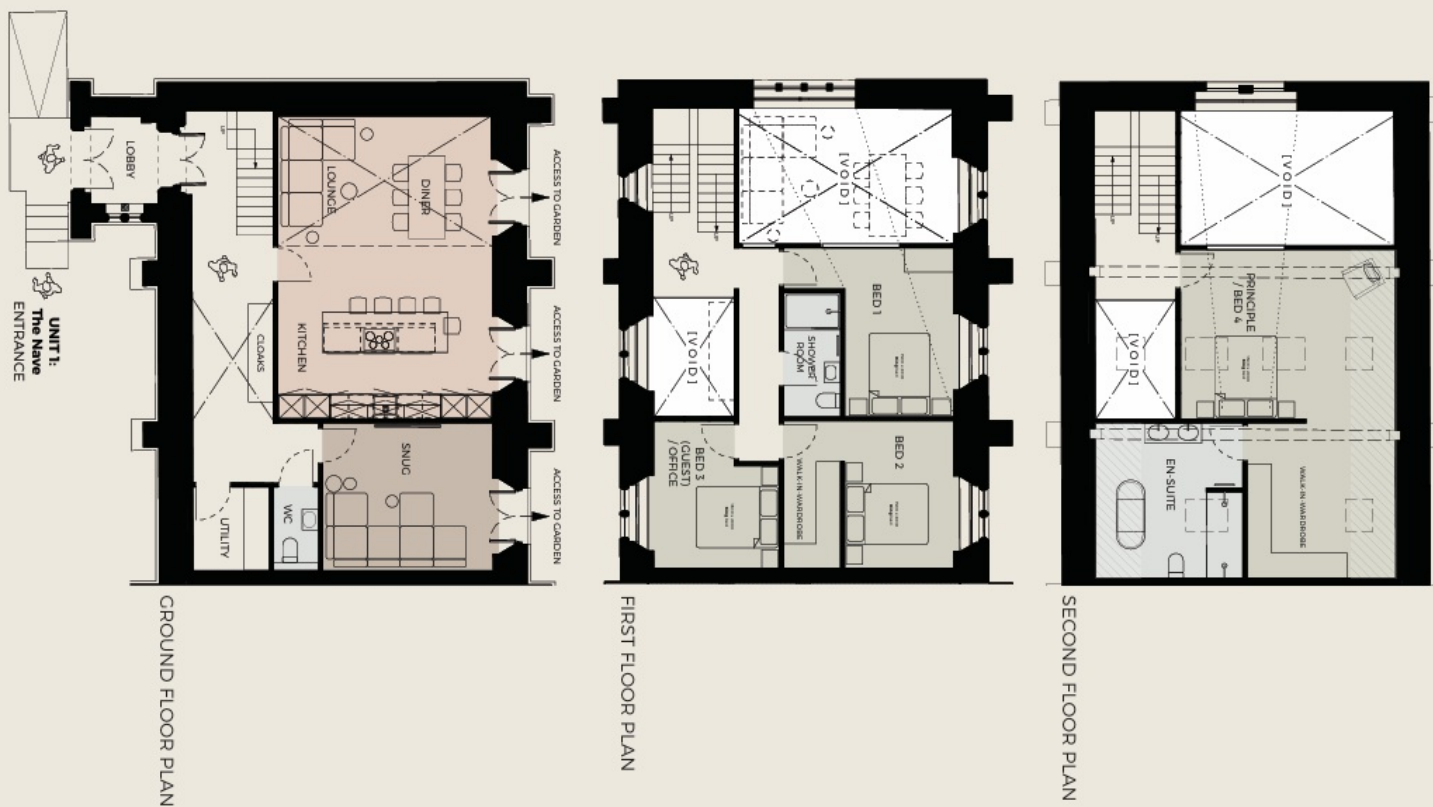
THE NAVE, ST.BART'S, RUSWARP- 4 bed Character Property -£550,000



Hope & Braim are delighted to present The Nave at St.Bart's in Ruswarp to the market. Situated within the charming village of Ruswarp, this extraordinary residence represents a masterful transformation of the historic St. Bartholomew's Church into a truly exceptional family home. This Grade II Listed Victorian sanctuary has been thoughtfully converted to create a stunning property that seamlessly marries ecclesiastical grandeur with contemporary luxury. The heart of this remarkable home lies in its breathtaking open-plan living space, where soaring vaulted ceilings and magnificent full-height windows create an atmosphere of cathedral-like splendour. Original stained-glass windows cast jewelled light across the interior, while carved sandstone details serve as beautiful reminders of the building's sacred heritage. The bespoke modern kitchen forms a sophisticated centerpiece, featuring a substantial island and premium integrated appliances that cater to both everyday living and grand entertaining. Four generous double bedrooms provide luxurious accommodation, including a principal suite complete with private dressing room - a sanctuary within a sanctuary. Two sumptuous bathrooms showcase contemporary design excellence, while the comprehensive heating system combines efficient air source heating with indulgent underfloor warmth throughout. Externally, the property benefits from a delightful private garden featuring an entertaining patio, perfect for alfresco dining whilst admiring this architectural marvel. Convenient private parking adds practical appeal to this extraordinary offering. Ruswarp's village amenities lie within easy reach, whilst the dramatic North Yorkshire coastline beckons just moments away. This is a rare opportunity to acquire a home of genuine distinction - where history, craftsmanship and modern luxury converge in perfect harmony. A conversion of this calibre rarely appears on the market, making this an unmissable opportunity for the discerning purchaser.



THE NAVE, ST.BART'S, RUSWARP- 4 bed Character Property -£550,000



Disclaimer: This brochure and property details are a representation of the property offered for sale or rent, as a guide only.

No fixtures or fittings, heating system or appliances have been tested, nor are they warranted by Hope & Braim or any staff member in any way as being functional or regulation compliant.

Hope & Braim do not accept any liability for any loss that may be caused directly or indirectly by the brochure content, all interested parties must rely on their own, their surveyor's or solicitor's findings.

We advise all interested parties to check with the local planning office for details of any application or decisions that may be consequential to your decision to purchase or rent any property.

Any floor plans provided should be used for illustrative purposes only and should be used as such by any interested party.

