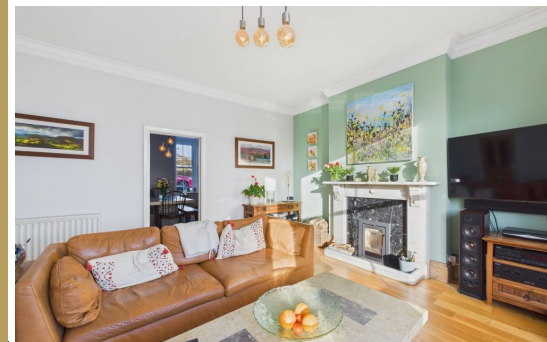




01947 601301



ABBOTSFORD,  
FYLINGTHORPE

5 BED SEMI-DETACHED HOUSE



[WWW.HOPEANDBRAIMESTATEAGENTS.CO.UK](http://WWW.HOPEANDBRAIMESTATEAGENTS.CO.UK)





## PROPERTY FEATURES

- Semi-Detached Victorian Villa with Gardens & Parking
- Period Features include High Ceilings & Fireplaces
- Light-Filled Lounge with South-Facing Bay Window
- Galley Kitchen with Integrated Appliances
- Principal Bedroom with En-Suite Bathroom
- 5 Bedrooms, 2 Modern Bathrooms & Downstairs WC
- Gas Central Heating & Double-Glazing Throughout
- South-Facing Garden with Views across to Ravenscar
- Garage & Off-Street Parking

Type: **SEMI-DETACHED HOUSE**

Availability: **FOR SALE**

Bedrooms: **5**

Bathrooms: **2**

Reception Rooms: **2**

Parking: **DRIVEWAY, GARAGE**

Outside Space: **GARDEN**

Tenure: **FREEHOLD**

01947 601301

[www.hopeandbraimstateagents.co.uk](http://www.hopeandbraimstateagents.co.uk)



ABBOTSFORD, FYLINGTHORPE- 5 bed Semi-Detached House -£475,000

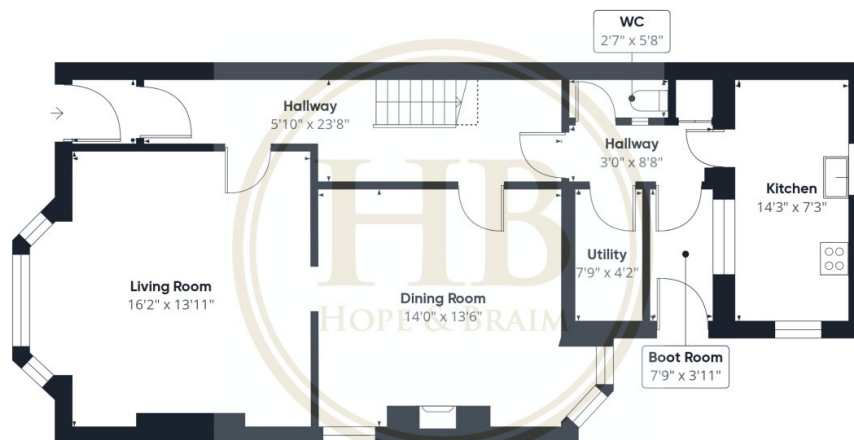




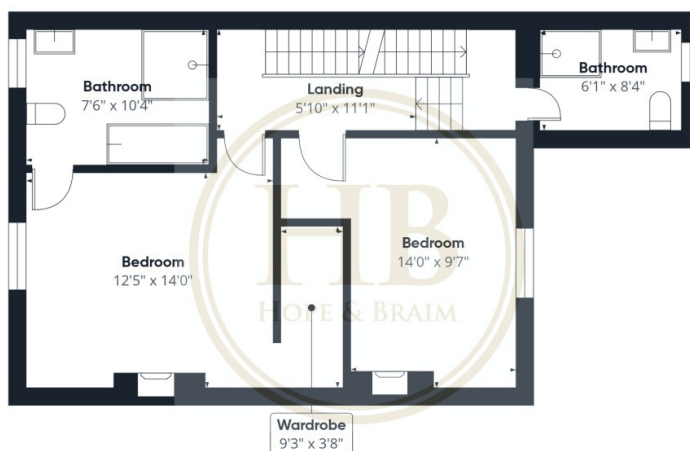
Abbotsford is a substantial semi-detached Victorian villa occupies a wonderful position in the sought-after village of Fylingthorpe, offering generous family accommodation across three well-proportioned floors. The property retains many appealing period features, including high ceilings and attractive fireplaces, whilst benefiting from modern conveniences such as gas central heating and double-glazing throughout. The ground floor comprises a light-filled lounge with a south-facing bay window that floods the space with natural light, a separate dining room ideal for entertaining, and a practical galley kitchen fitted with integrated appliances. A useful utility room provides additional storage, whilst a downstairs WC adds convenience for family life. The first floor accommodates two well-appointed bedrooms, including a principal bedroom with the luxury of an en-suite bathroom. There is a family bathroom off the half-landing and the top floor has three bedrooms, ensuring ample facilities for family and guests alike. Externally, the property benefits from a delightful south-facing garden offering far-reaching views across to the dramatic headland of Ravenscar—a rare and enchanting aspect that can be enjoyed throughout the seasons. The inclusion of a garage and off-street parking provides practical everyday convenience, particularly valued in this popular coastal location. Fylingthorpe enjoys a tranquil setting within the North York Moors National Park, yet remains within easy reach of the picturesque village of Robin Hood's Bay and the historic town of Whitby. With its blend of period charm, spacious accommodation, and enviable outlook, this handsome Victorian villa presents an excellent opportunity for those seeking a characterful family home in one of the area's most desirable locations.



ABBOTSFORD, FYLINGTHORPE- 5 bed Semi-Detached House -£475,000



Floor 0



Floor 1



Floor 2



Approximate total area<sup>(1)</sup>

1701 ft<sup>2</sup>

Reduced headroom

35 ft<sup>2</sup>

(1) Excluding balconies and terraces

Reduced headroom

..... Below 5 ft

Calculations reference the RICS IPMS 3C standard. Measurements are approximate and not to scale. This floor plan is intended for illustration only.

GIRAFFE360

Disclaimer: This brochure and property details are a representation of the property offered for sale or rent, as a guide only.

Brochure content must not be relied upon as fact and does not form any part of a contract. Measurements are approximate.

No fixtures or fittings, heating system or appliances have been tested, nor are they warranted by Hope & Braim or any staff member in any way as being functional or regulation compliant.

Hope & Braim do not accept any liability for any loss that may be caused directly or indirectly by the brochure content, all interested parties must rely on their own, their surveyor's or solicitor's findings.

We advise all interested parties to check with the local planning office for details of any application or decisions that may be consequential to your decision to purchase or rent any property.

Any floor plans provided should be used for illustrative purposes only and should be used as such by any interested party.

