



01947 601301

19 ORCHARD ROAD, SLEIGHTS

3 BED SEMI-DETACHED
BUNGLOW



WWW.HOPEANDBRAIMESTATEAGENTS.CO.UK



PROPERTY FEATURES

- Semi-Detached Dormer Bungalow with Views
- 2 Reception Rooms & Separate Kitchen
- 3 Bedrooms & 2 Bathrooms over 2 Floors
- Gas Central Heating & Double-Glazing Throughout
- Off-Street Parking for 2 Vehicles
- Tiered Terraces with Summerhouse

Type: SEMI-DETACHED BUNGALOW

Availability: FOR SALE

Bedrooms: 3

Bathrooms: 2

Reception Rooms: 2

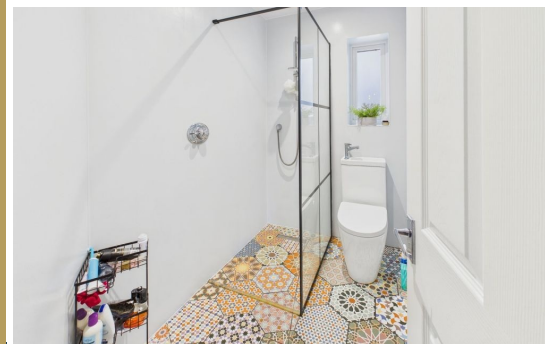
Parking: DRIVEWAY

Outside Space: GARDEN, TERRACE

Tenure: FREEHOLD

01947 601301

www.hopeandbraimstateagents.co.uk



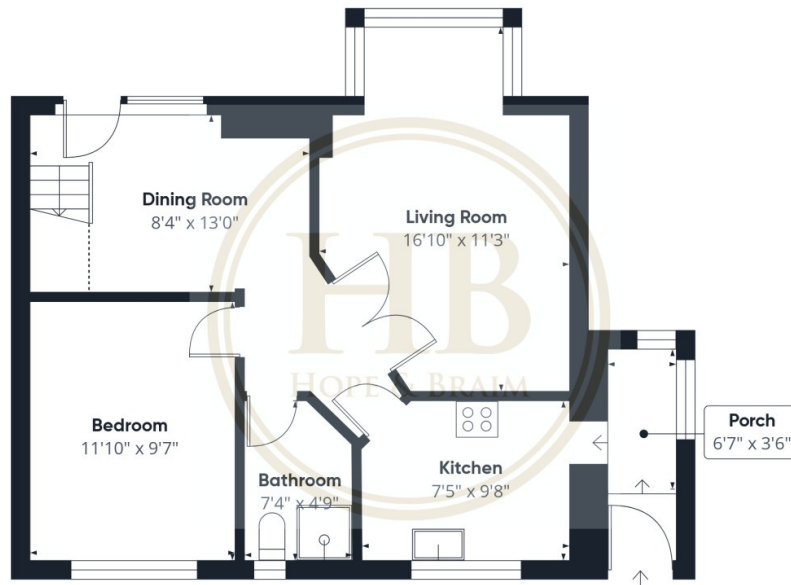
19 ORCHARD ROAD, SLEIGHTS- 3 bed Semi-Detached Bungalow -£250,000



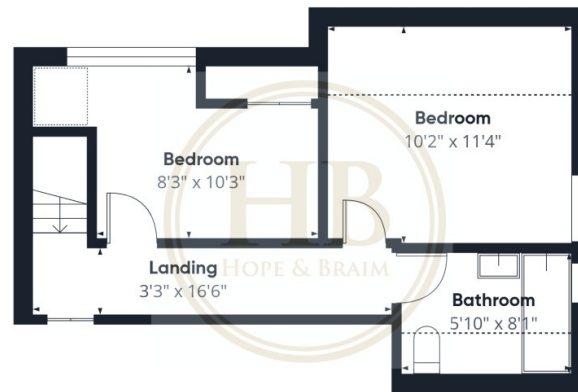
Enjoying an elevated position with delightful rural views across the valley below, this charming semi-detached dormer bungalow presents versatile accommodation over two floors, having recently undergone comprehensive re-modeling and redecoration throughout. The property combines traditional charm with contemporary comfort, offering flexible living arrangements ideally suited to modern family life or those seeking single-level living with additional guest accommodation. The thoughtfully configured ground floor provides a well-proportioned bedroom, shower room with underfloor heating, separate kitchen with integrated appliances, and a lounge with a fireplace and large picture window that is linked to the dining room via glazed doors. The first floor delivers two further bedrooms and a family bathroom. Gas central heating and double-glazing ensure year-round comfort, whilst off-street parking for two vehicles adds practical convenience. The exterior proves equally impressive, featuring attractively tiered terraces that cascade down the hillside, maximizing the rural outlook and creating distinct entertaining spaces. A charming summerhouse provides the perfect retreat for enjoying the stunning moorland panorama, whilst the established gardens offer both visual appeal and recreational potential. Sleights village provides an enviable combination of peaceful countryside living with excellent accessibility. The River Esk meanders through this picturesque settlement, which offers essential amenities including a primary school, public house, and local shops. The historic port of Whitby lies just three miles distant, whilst the North York Moors Railway station at Grosmont connects to the national network, making this an ideal location for those seeking both tranquility and connectivity. This beautifully presented property represents a rare opportunity to acquire a substantially improved dormer bungalow in one of North Yorkshire's most sought-after villages, where quality of life and natural beauty combine effortlessly.



19 ORCHARD ROAD, SLEIGHTS- 3 bed Semi-Detached Bungalow -£250,000



Floor 0



Floor 1



Approximate total area⁽¹⁾

870 ft²

Reduced headroom

64 ft²

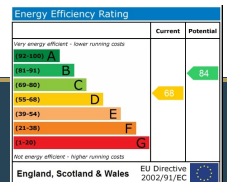
(1) Excluding balconies and terraces

Reduced headroom

..... Below 5 ft

Calculations reference the RICS IPMS 3C standard. Measurements are approximate and not to scale. This floor plan is intended for illustration only.

GIRAFFE360



Disclaimer: This brochure and property details are a representation of the property offered for sale or rent, as a guide only.

Brochure content must not be relied upon as fact and does not form any part of a contract. Measurements are approximate.

No fixtures or fittings, heating system or appliances have been tested, nor are they warranted by Hope & Braim or any staff member in any way as being functional or regulation compliant.

Hope & Braim do not accept any liability for any loss that may be caused directly or indirectly by the brochure content, all interested parties must rely on their own, their surveyor's or solicitor's findings.

We advise all interested parties to check with the local planning office for details of any application or decisions that may be consequential to your decision to purchase or rent any property.

Any floor plans provided should be used for illustrative purposes only and should be used as such by any interested party.

