



01947 601301



21 SEAVIEW CLOSE, WHITBY

4 BED DETACHED HOUSE



WWW.HOPEANDBRAIMESTATEAGENTS.CO.UK



PROPERTY FEATURES

- Immaculately resented detached home located at the head of a cul-de-sac
- 1,100 sq ft of accommodation over 2 floors
- Open plan living with well-proportioned rooms and connecting double doors
- 4 double bedrooms & 3 bathrooms, including 2 en-suites
- Former garage has been converted into a bedroom & ensuite
- Modern gas central heating and double-glazing throughout
- Conservatory & Garden with Artificial Lawn
- Located on the Western edge of town opposite Sneaton Castle

Type: **DETACHED HOUSE**

Availability: **FOR SALE**

Bedrooms: **4**

Bathrooms: **3**

Reception Rooms: **2**

Parking: **DRIVEWAY**

Outside Space: **GARDEN**

Tenure: **FREEHOLD**

01947 601301

www.hopeandbraimstateagents.co.uk



21 SEAVIEW CLOSE, WHITBY- 4 bed Detached House -£340,000



Hope & Braim are delighted to present 21 Sea View Close, Whitby — a beautifully presented family home in a sought-after cul-de-sac location.

This immaculately maintained property is situated at the end of a quiet cul-de-sac within a small, primarily residential development on the western edge of town. Offering turnkey-ready accommodation, the home is in excellent decorative order throughout and has been thoughtfully extended to enhance both space and flexibility.

The former integral garage has been converted into a versatile downstairs double bedroom with an en-suite wet room — ideal for guests, multi-generational living, a home office, or an additional reception room. The spacious lounge connects seamlessly to a bright, open-plan kitchen/diner via double doors, which in turn leads to a conservatory and a convenient downstairs WC.

Upstairs, you'll find three generously sized double bedrooms, including a principal bedroom with a modern en-suite shower room, alongside a stylish family bathroom. The property benefits from gas central heating and double glazing throughout, ensuring comfort and energy efficiency.

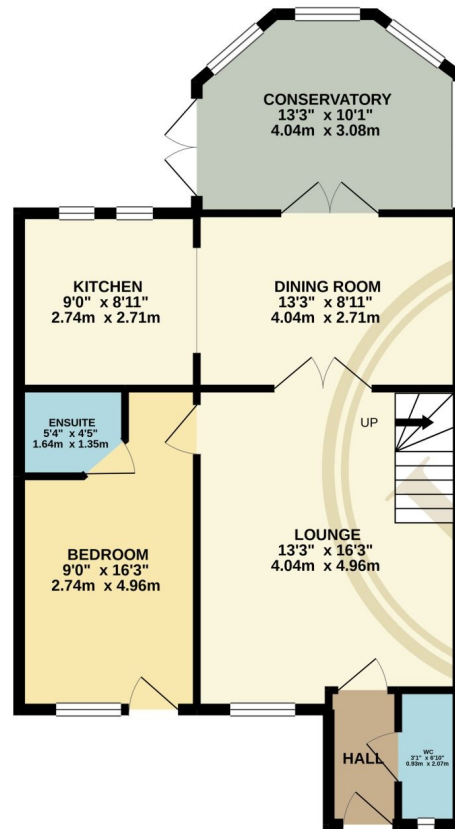
Externally, the home enjoys a low-maintenance front courtyard and a driveway providing ample off-street parking. To the rear, the landscaped garden features an artificial lawn and a desirable westerly aspect — perfect for enjoying the afternoon and evening sun.

A superbly located and move-in ready home that offers space, style, and flexibility for modern family living.

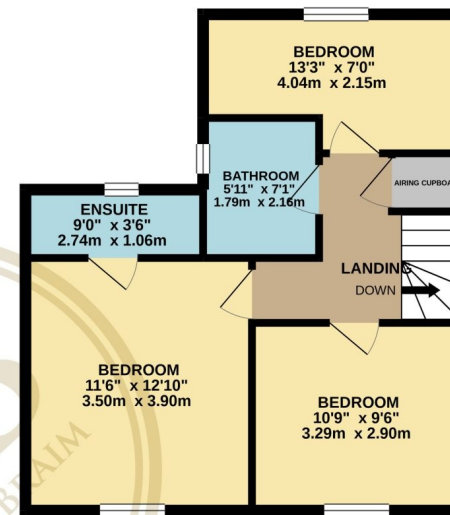


21 SEAVIEW CLOSE, WHITBY- 4 bed Detached House -£340,000

GROUND FLOOR
718 sq.ft. (66.7 sq.m.) approx.



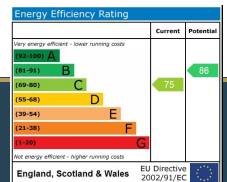
1ST FLOOR
480 sq.ft. (44.6 sq.m.) approx.



TOTAL FLOOR AREA : 1198 sq.ft. (111.3 sq.m.) approx.

Whilst every attempt has been made to ensure the accuracy of the floorplan contained here, measurements of doors, windows, rooms and any other items are approximate and no responsibility is taken for any error, omission or mis-statement. This plan is for illustrative purposes only and should be used as such by any prospective purchaser. The services, systems and appliances shown have not been tested and no guarantee as to their operability or efficiency can be given.

Made with Metropix ©2021



Disclaimer: This brochure and property details are a representation of the property offered for sale or rent, as a guide only.

Brochure content must not be relied upon as fact and does not form any part of a contract. Measurements are approximate.

No fixtures or fittings, heating system or appliances have been tested, nor are they warranted by Hope & Braim or any staff member in any way as being functional or regulation compliant.

Hope & Braim do not accept any liability for any loss that may be caused directly or indirectly by the brochure content, all interested parties must rely on their own, their surveyor's or solicitor's findings.

We advise all interested parties to check with the local planning office for details of any application or decisions that may be consequential to your decision to purchase or rent any property.

Any floor plans provided should be used for illustrative purposes only and should be used as such by any interested party.

