



01947 601301



16 GROVE STREET,  
WHITBY

4 BED TERRACED HOUSE



[WWW.HOPEANDBRAIMESTATEAGENTS.CO.UK](http://WWW.HOPEANDBRAIMESTATEAGENTS.CO.UK)





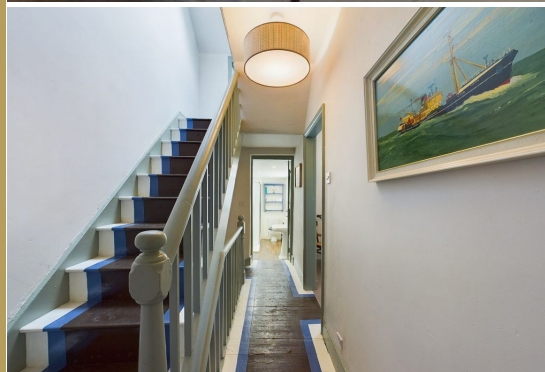
## PROPERTY FEATURES

- Victorian Terrace close to the Town & Harbour
- Beautifully Restored Period Home with Features
- Open Plan Living with Bay Window & Fireplace
- 4 Bedrooms & Modern Shower Room
- Gas Central Heating & Double-Glazing Throughout
- Enclosed Yard with Access to the Rear

Type: **TERRACED HOUSE**  
Availability: **FOR SALE**  
Bedrooms: **4**  
Bathrooms: **1**  
Reception Rooms: **1**  
Parking: **ON ROAD PARKING**  
Outside Space: **YARD**  
Tenure: **FREEHOLD**

01947 601301

[www.hopeandbraimstateagents.co.uk](http://www.hopeandbraimstateagents.co.uk)



16 GROVE STREET, WHITBY - 4 bed Terraced House - £235,000





Hope & Braim are delighted to present 16 Grove Street in Whitby to the market. This Victorian Terrace has been lovingly restored with great care to preserve the many period features whilst creating a contemporary home close to the town centre. Built at the turn of the century, these terraces were initially built for the influx of workers that the new railway brought in, and now lends this area its name. The front façade has decorative brickwork and a large bay window whilst to the rear is a two-storey extension which accounts for nearly 1,000 sq ft in total over the three floors. Downstairs there is a lounge with a fireplace at the front and a large opening link through to the back where there is a kitchen/diner and separate utility room. The kitchen has an eclectic mix of period pieces and industrial kitchen items that blend to create a simple kitchen with lots of character. The utility has plumbing for a washing machine, houses the gas central heating boiler and a glazed entrance door to the enclosed rear yard. On the first floor there are two bedrooms, both with period fireplaces, and a modern shower room with downlighting. On the top floor are a further two bedrooms with Velux Windows and the rear bedroom has views across to Whitby's Abbey. If you are looking for a period home that has character throughout, we strongly recommend taking a closer look at this charming property.



16 GROVE STREET, WHITBY - 4 bed Terraced House - £235,000



Disclaimer: This brochure and property details are a representation of the property offered for sale or rent, as a guide only. Brochure content must not be relied upon as fact and does not form any part of a contract. Measurements are approximate. No fixtures or fittings, heating system or appliances have been tested, nor are they warranted by Hope & Braim or any staff member in any way as being functional or regulation compliant. Hope & Braim do not accept any liability for any loss that may be caused directly or indirectly by the brochure content, all interested parties must rely on their own, their surveyor's or solicitor's findings. We advise all interested parties to check with the local planning office for details of any application or decisions that may be consequential to your decision to purchase or rent any property. Any floor plans provided should be used for illustrative purposes only and should be used as such by any interested party.