

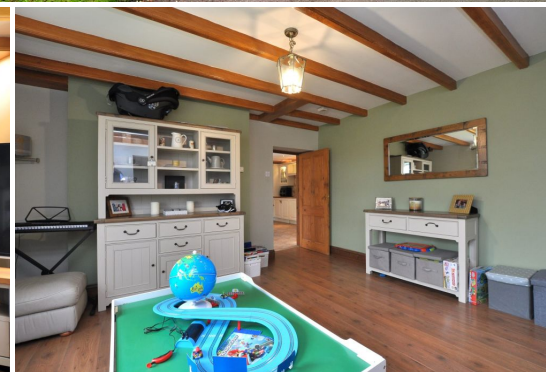


01947 601301



RUSSELL HALL
FARMHOUSE,
SNEATONTHORPE

4 BED DETACHED HOUSE



WWW.HOPEANDBRAIMESTATEAGENTS.CO.UK



PROPERTY FEATURES

- Detached Stone Farmhouse with Rural Views
- 1,800 sq ft of Accommodation over 3 Floors
- Open Plan Living with Feature Fireplace
- Family Kitchen/Diner with Rayburn & Separate Utility
- 4 Bedrooms, 2 Bathrooms & Downstairs WC
- Lawned Gardens with Fruit Trees & Sun Deck
- Double Garage & Gated Driveway with Ample Parking
- Rural Location only 3 miles from the Coast

Type: **DETACHED HOUSE**
Availability: **FOR SALE**
Bedrooms: **4**
Bathrooms: **2**
Reception Rooms: **2**
Parking: **DOUBLE GARAGE**
Outside Space: **GARDEN**
Tenure: **FREEHOLD**

01947 601301

www.hopeandbraimstateagents.co.uk



RUSSELL HALL FARMHOUSE, SNEATONTHORPE - 4 bed Detached House - £565,000



Hope & Braim are delighted to present Russell Hall Farmhouse in Sneatonthorpe to the market. A generously proportioned period home set on a third-of-an-acre plot that comes with a double garage and a sun deck with views located in a small hamlet only 3 miles from the coast. This attractive stone property dates from the early 1800s and does have period features including an Inglenook fireplace that is a standout feature in the living space. The layout lends itself to modern family living with a large, farmhouse-style kitchen that has a Rayburn Cooker, integrated appliances, and room for a dining table. There is a separate utility room and a downstairs WC off the kitchen plus a conservatory that links the inside with the outside and a timber sundeck that's the ideal spot for entertaining and relaxing. There are two reception rooms that are open plan with the fireplace at one end and a large opening linking the two rooms currently used as a lounge and a children's playroom. There is also a study and a lobby. Upstairs there are two double bedrooms both with built-in wardrobes and the principal bedroom has its own ensuite shower room, plus there is a family bathroom with a three-piece bathroom suite. On the top floor there are two further bedrooms that have additional eaves storage. The property benefits from having oil central heating and timber framed double-glazing. Outside there is a gated driveway that offers ample parking plus there is a double garage at the back, whilst to the front there are lawned gardens with mature trees.



RUSSELL HALL FARMHOUSE, SNEATONTHORPE - 4 bed Detached House - £565,000



TOTAL FLOOR AREA: 1852 sq.ft. (172.1 sq.m.) approx.

Whilst every attempt has been made to ensure the accuracy of the floorplan contained here, measurements of doors, windows, rooms and any other items are approximate and no responsibility is taken for any error, omission or mis-statement. This plan is for illustrative purposes only and should be used as such by any prospective purchaser. The services, systems and appliances shown have not been tested and no guarantee as to their operability or efficiency can be given.
Made with Metropix ©2023



Disclaimer: This brochure and property details are a representation of the property offered for sale or rent, as a guide only. Brochure content must not be relied upon as fact and does not form any part of a contract. Measurements are approximate. No fixtures or fittings, heating system or appliances have been tested, nor are they warranted by Hope & Braim or any staff member in any way as being functional or regulation compliant. Hope & Braim do not accept any liability for any loss that may be caused directly or indirectly by the brochure content, all interested parties must rely on their own, their surveyor's or solicitor's findings. We advise all interested parties to check with the local planning office for details of any application or decisions that may be consequential to your decision to purchase or rent any property. Any floor plans provided should be used for illustrative purposes only and should be used as such by any interested party.