



01947 601301



LITTLEBECK COTTAGE, RAITHWAITE ESTATE

3 BED COTTAGE



WWW.HOPEANDBRAIMESTATEAGENTS.CO.UK



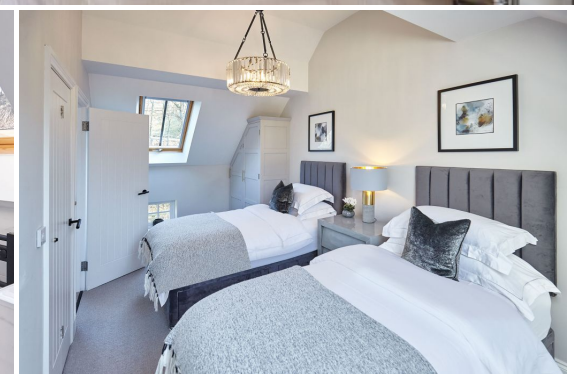
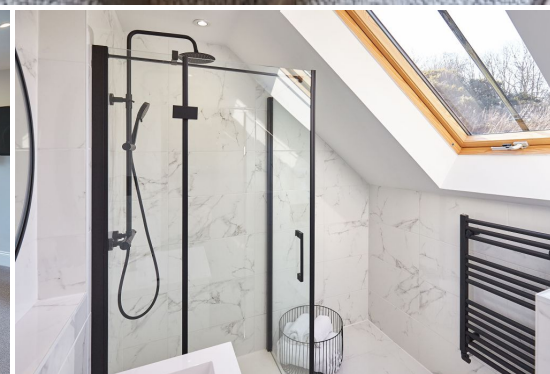
PROPERTY FEATURES

- Luxury Holiday Cottage on the Raithwaite Estate
- Open Plan Living with Bi-Fold Doors onto a Sun Terrace
- Stunning Kitchen with Island & Integrated Appliances
- 3 Double Bedrooms & 3 En-Suite Shower Rooms
- Landscaped Gardens with Lawns & Stone Terraces
- Private Parking for 3 Vehicles & Guest Parking
- Idyllic Woodland Setting close to a Sandy Beach
- Highly Successful Holiday Let that comes with Furniture & Bookings

Type: **COTTAGE**
Availability: **FOR SALE**
Bedrooms: **3**
Bathrooms: **3**
Parking: **ALLOCATED PARKING**
Outside Space: **GARDEN**

01947 601301

www.hopeandbraimstateagents.co.uk



LITTLEBECK COTTAGE, RAIHWAITE ESTATE - 3 bed Cottage - £800,000



Hope & Braim are delighted to present Littlebeck Cottage on the Raithwaite Estate to the market. Nestled in an ancient woodland bordered by a beck with a nearby waterfall that lends it's name to this simply stunning holiday cottage that offers luxurious accommodation and an outdoors lifestyle located on a private estate near the coast. The property was traditionally constructed using stone and pan-tiles which has latterly been extended and completely refurbished to a very high standard using quality materials and craftsmanship. The interiors have been beautifully curated to create calm spaces with a touch of luxury with bespoke furnishings and soft textiles. Downstairs there is an open plan kitchen/diner with fitted cabinets, white granite worktops and high-end integrated appliances, whilst the dining space is linked to the outside terraces via bi-fold doors. The extension has added another reception room that is a cosy lounge flooded with natural light from the large lantern light above and windows overlooking the garden and woodland. There is a double bedroom with its own en-suite shower room plus a boot room and downstairs cloakroom, all having underfloor heating. Upstairs there are a further two double bedrooms, both with en-suite shower rooms and all benefiting from having gas central heating and double-glazing. The gardens have been landscaped with a large stone terrace ideal for entertaining and alfresco dining that has two motorised awnings that allow all year round use, plus there are lawns and private parking. The Raithwaite Estate is currently being further developed to create a holiday village with amenities as well as the established Hotel & Spa, making this a destination resort on the North Yorkshire Coast.



LITTLEBECK COTTAGE, RAIHWAITHE ESTATE - 3 bed Cottage - £800,000

GROUND FLOOR
801 sq.ft. (74.4 sq.m.) approx.

1ST FLOOR
537 sq.ft. (49.9 sq.m.) approx.



TOTAL FLOOR AREA : 1338 sq.ft. (124.3 sq.m.) approx.

Whilst every attempt has been made to ensure the accuracy of the floorplan contained here, measurements of doors, windows, rooms and any other items are approximate and no responsibility is taken for any error, omission or mis-statement. This plan is for illustrative purposes only and should be used as such by any prospective purchaser. The services, systems and appliances shown have not been tested and no guarantee as to their operability or efficiency can be given.
Made with Metropix ©2023

Disclaimer: This brochure and property details are a representation of the property offered for sale or rent, as a guide only.

Brochure content must not be relied upon as fact and does not form any part of a contract. Measurements are approximate.

No fixtures or fittings, heating system or appliances have been tested, nor are they warranted by Hope & Braim or any staff member in any way as being functional or regulation compliant.

Hope & Braim do not accept any liability for any loss that may be caused directly or indirectly by the brochure content, all interested parties must rely on their own, their surveyor's or solicitor's findings.

We advise all interested parties to check with the local planning office for details of any application or decisions that may be consequential to your decision to purchase or rent any property.

Any floor plans provided should be used for illustrative purposes only and should be used as such by any interested party.

