



01947 601301

47 METROPOLE
TOWERS

2 BED APARTMENT



WWW.HOPEANDBRAIMESTATEAGENTS.CO.UK



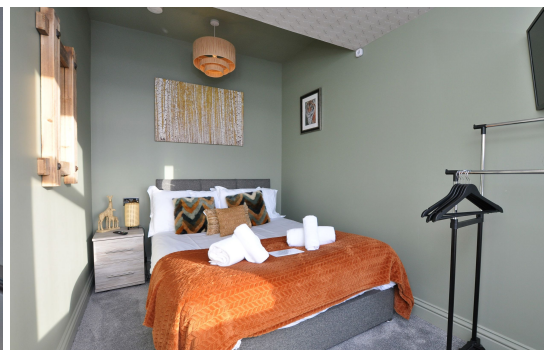
PROPERTY FEATURES

- Stunning Apartment with Far-Reaching Views
- Former Victorian Hotel located on Whitby's West Cliff
- Immaculate Interiors with Quality Fixtures & Fittings
- Open Plan Living with a Galley Kitchen
- 2 Double Bedrooms with Slipper Bath & Ensuite WC
- Luxurious Bathroom with Walk-in Shower
- Underfloor Heating & Double-Glazing Throughout
- Currently a Successful Holiday Let that can be Sold Fully Furnished & Holiday Letting Management

Type: **APARTMENT**
Availability: **FOR SALE**
Bedrooms: **2**
Bathrooms: **2**
Reception Rooms: **1**
Tenure: **FREEHOLD**

01947 601301

www.hopeandbraimstateagents.co.uk



47 METROPOLE TOWERS - 2 bed Apartment - £250,000

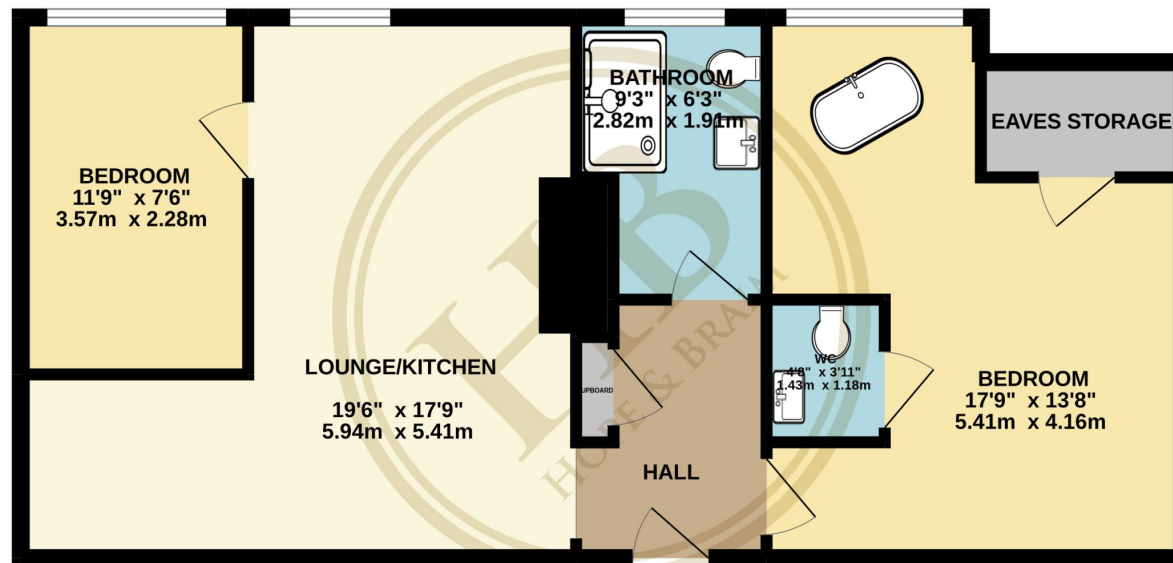


Hope & Braim are delighted to present Apartment 47 Metropole Towers in Whitby to the market. In our opinion, this is one of the most stylish apartments within this converted Victorian Hotel, that stands proudly on Whitby's Westcliff. The apartment is on the top floor and on the Southern façade which is served by a lift and boasts far-reaching views across the town's rooftops and the Moors beyond. Having undergone a full renovation to a very high standard the apartment has luxurious interiors with quality fixtures and fittings throughout. There is an open plan lounge/diner with a galley kitchen just off to one side that gives this apartment a loft living vibe. The kitchen has dark-coloured cabinetry, white quartz stone worktops and integrated appliances. Both bedrooms are doubles and both have large south-facing glazing that flood the rooms with natural light. The principal bedroom has a free-standing slipper bath and an en-suite WC, plus there is a second bathroom that has a walk-in shower, striking tiling and a modern white suite. The apartment is currently a successful holiday let which is let under the name of "Elysium Suite" and can be offered fully furnished and with holiday letting management, making for an easy and attractive buy-to-let investment.



47 METROPOLE TOWERS - 2 bed Apartment - £250,000

GROUND FLOOR
656 sq.ft. (60.9 sq.m.) approx.



TOTAL FLOOR AREA : 656 sq.ft. (60.9 sq.m.) approx.

Whilst every attempt has been made to ensure the accuracy of the floorplan contained here, measurements of doors, windows, rooms and any other items are approximate and no responsibility is taken for any error, omission or mis-statement. This plan is for illustrative purposes only and should be used as such by any prospective purchaser. The services, systems and appliances shown have not been tested and no guarantee as to their operability or efficiency can be given.
Made with Metropix ©2022



Disclaimer: This brochure and property details are a representation of the property offered for sale or rent, as a guide only.

Brochure content must not be relied upon as fact and does not form any part of a contract. Measurements are approximate.

No fixtures or fittings, heating system or appliances have been tested, nor are they warranted by Hope & Braim or any staff member in any way as being functional or regulation compliant.

Hope & Braim do not accept any liability for any loss that may be caused directly or indirectly by the brochure content, all interested parties must rely on their own, their surveyor's or solicitor's findings.

We advise all interested parties to check with the local planning office for details of any application or decisions that may be consequential to your decision to purchase or rent any property.

Any floor plans provided should be used for illustrative purposes only and should be used as such by any interested party.

